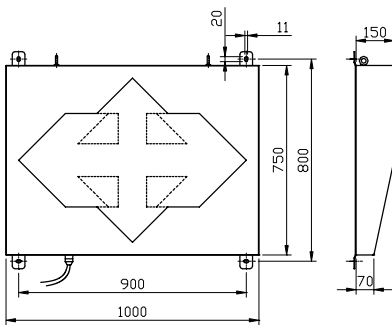
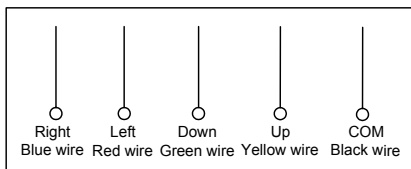


Mounting dimension (Unit:mm)



Wiring diagram



Wiring definition diagram

Application



Applications

Specially design for variety of large-scale port machinery, engineering machinery, cranes and other machinery road traffic directions.

Main Functions and features

- Employ stainless steel with powdercoat paint finishes enclosure, providing environmental protection, corrosion resistance and maintenance free.
- Use super bright LED cluster as bulbs, providing external long life.
- Transparent safety glass as front panel, providing high transmittance and firmly sealed.
- Four arrowheads direct four states, easy of operation.

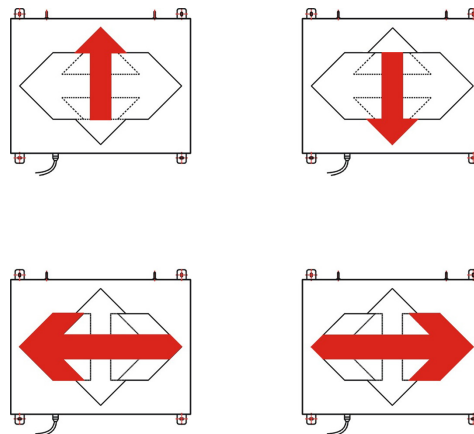
Specifications

Voltage	DC24V(special voltage can be customized)	LED Color	Red(special color can be customized)
Power	75W	LED Lifetime	> 100,000hrs
Visible distance	> 200m		
Operating temperature:	-30°C ~ +70°C	IP Protection	IP65
Relative humidity	10% ~ 95% (no condensing)	Weight	35.5Kg
Material	Stainless steel		

Installation and Operation

- Check whether the operating voltage complies with the rated voltage of the siren.
- Secure the alarm body on a smooth surface with enough mechanical strength using 4 M10 Stainless steel screws. Mounting surface should be in a line with the axes of lamp body.
- Follow the wiring diagram of Figure I. connect the signal line.
- Connect power then indicator start work,be sure check the wiring correct.

Working style



Notice

- Please follow the instructions. Any questions, please contact us.